



# Corporate Profile

For High Quality Engineering

# 2026



www.tec.com.z  
2026

# Welcome to TÉCNICA

Founded in 1989, TÉCNICA is a multidisciplinary engineering and architecture consultancy firm that has established itself as a benchmark in Mozambique's engineering sector.

Headquartered in Maputo, the company has progressively expanded its footprint across the country, with branch offices in Pemba, Nampula, Tete and Quelimane, as well as representations in Lichinga, Chimoio and Inhambane. This nationwide presence ensures proximity to Clients and a strong capacity to respond effectively to the demands of projects throughout Mozambique.

With a solid track record of over 1,200 projects and studies successfully delivered, TÉCNICA has consistently contributed to the country's socio-economic development. Its multidisciplinary approach, combined with deep technical expertise, enables the delivery of integrated, efficient and sustainable engineering solutions.

At the core of TÉCNICA's success is its people. The company values the dedication, professionalism and expertise of its team, whose commitment has been fundamental in building a reputation for quality, reliability and innovation.

TÉCNICA also recognises the importance of strong and lasting partnerships. The trust placed by its Clients, Partners and Associated Companies has been instrumental in its growth. In every project, the company remains committed to delivering solutions that enhance infrastructure, promote development and improve the quality of life of Mozambicans.

## Our Figures



# Table of Contents

Welcome to TÉCNICA	01
Who We Are   Certifications and Licences	03
Governance	04
Organization Chart	05
Services   Capabilities	06
Management   Liability	07
Areas of Activity	08
Relevant Projects	09
Gallery	17
Projects Promoted by TÉCNICA	23
Our Presence	24



Since 1989, delivering excellence in  
**Engineering Studies and Projects**

# Who We Are

Founded in 1989, TÉCNICA – Engenheiros Consultores, Lda. is a leading Mozambican engineering and architecture consultancy firm, specialising in studies, design and supervision of development projects.

With over three decades of experience, TÉCNICA combines multidisciplinary expertise with a strong commitment to technical excellence, innovation and sustainability, delivering solutions that contribute to resilient infrastructure and national development.



## Mission

For high quality engineering



## Vision

- To be established all over the country;
- To be associated with major projects;
- To internationalize our activity.



## Values

- Competence, Boldness and High Quality;
- Client Satisfaction;
- Devotion, Discipline, Responsibility and Perseverance;
- Vision, Creativity and Initiative;
- Honesty, Integrity, Justice and Solidarity;
- Communication, Collaboration and Complementarity.

# Accreditations And Certifications

- ISO 9001:2015 – Quality Management System
- Environmental Consultancy Licence
- Environmental Audit Licence
- Engineering Consultancy Licence – Alvará Class 4



# Policy

**Satisfaction of its Clients:**

To provide distinctive and competent services that consistently and competitively exceed their expectations.

**Commitment:**

To work in compliance with the applicable legislation, integrating the best engineering practices worldwide.

**Improvement of Operational Results:**

To actively and continuously seek the implementation of more efficient solutions.

**Ingenuity:**

To incorporate solutions adapted to local conditions and available resources into services.

**Recognition for Competence:**

To ensure a high degree of goal achievement, continuous updating and knowledge sharing.

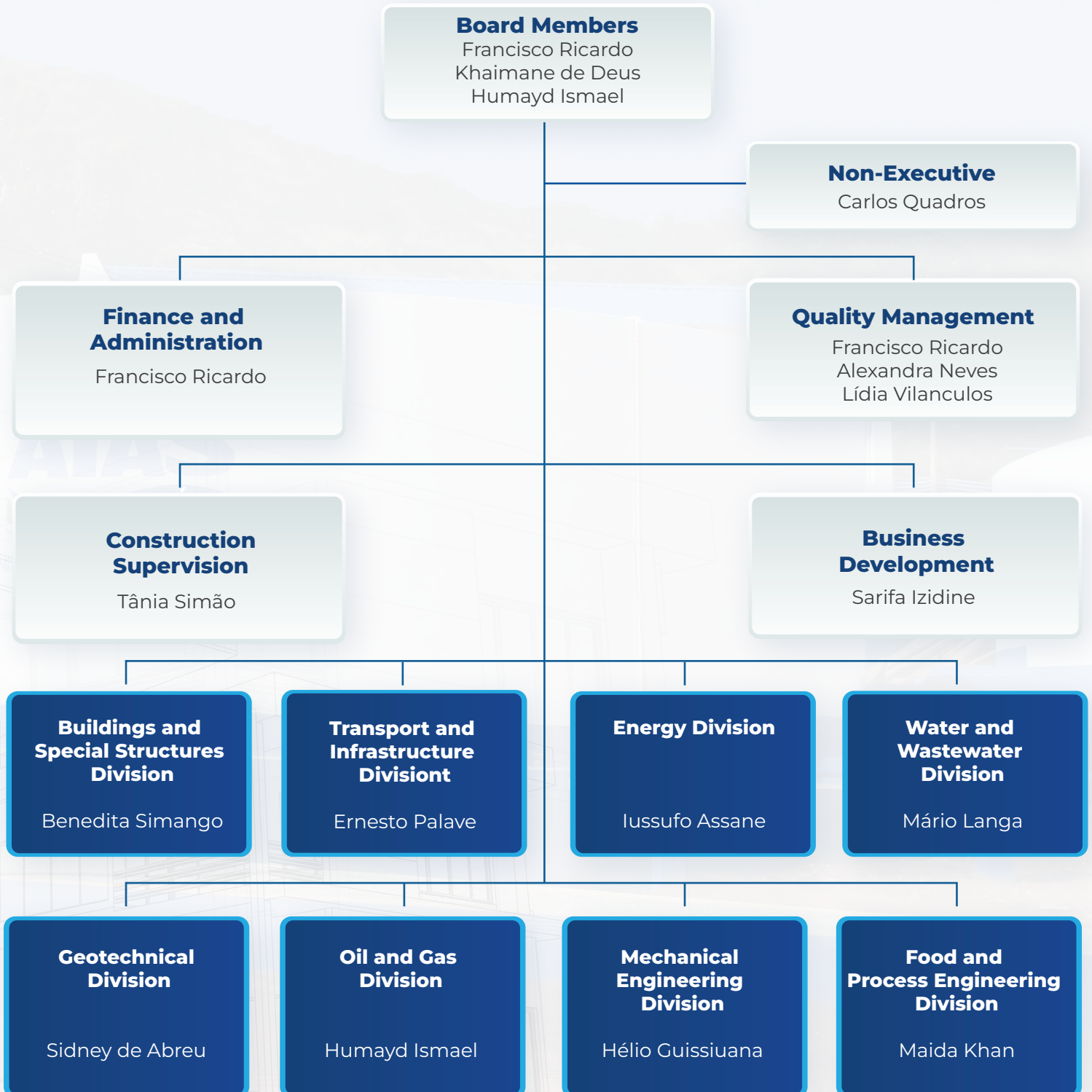
**Well-being of the Organization:**

To offer appropriate conditions for professional and personal development

**Responsibility:**

To maintain a socially and environmentally responsible attitude that contributes to the sustainable development.

# Organization Chart



# Services



## Technical Studies and Investigations

- Feasibility and Technical Studies
- Environmental and Social Impact Assessments (ESIA, EPDA, PEPI)
- Soil Investigation, Hydrology, Bathymetry and Topography



## Planning and Projects

- Project Identification and Planning
- Basic to Detailed Engineering Design (drawings, specifications and BoQs)
- Tender Documentation

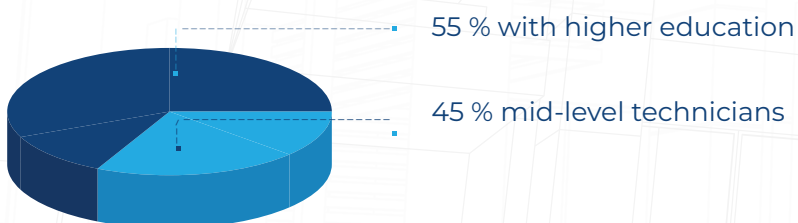


## Project Implementation

- Tender Support and Contract Negotiation
- Construction Supervision
- Project Management
- Defects Liability Support

# Human Resources

We are a multidisciplinary team of over 130 professionals, combining technical expertise and practical experience across all engineering disciplines.



Year	Technical Staff	Administrative Support	Total
2025	118	26	144
2024	105	25	130
2023	110	25	135

# Top Management

Name	Position	Qualifications	Experience
Francisco Ricardo	Civil & Hydraulic Engineer - Board Member	MSc Hydraulic Engineering	35 years
Khaimane de Deus	Civil & Transport Engineer - Board Member	MSc Transport Engineering	25 years
Humayd Ismael	Civil Engineer - Board Member	Postgraduate in Petroleum Engineering	16 years
Carlos Quadros	Civil & Geotechnical Engineer - Non-Executive Member	PhD Geotechnical Engineering	40 years
Alexandra Neves	Civil & Structural Engineer	MSc Structural Engineering	33 years

## Professional Indemnity and Liability

TÉCNICA maintains Professional Indemnity Insurance with coverage of approximately USD 5.2 million, ensuring the level of protection and assurance required for the execution of complex engineering projects.

# Areas of Activity



## Buildings and Special Structures

Industrial and commercial facilities,  
Residential developments,  
Public and institutional buildings.



## Transport and Infrastructures

Roads and urban infrastructure,  
Airports and transport systems,  
Railways, bridges and ports.



## Energy

Power generation,  
Transmission and distribution,  
Renewable energy solutions.



## Water and Wastewater

Water supply systems,  
Irrigation and sanitation,  
Dams and reservoirs,  
Hydrology and water resources,  
Environmental and social studies.



## Geotechnics

Geotechnical investigations,  
Foundation and soil engineering,  
Slope stability analysis,  
Ground improvement and earthworks.



## Mechanical Engineering

Industrial systems and installations,  
HVAC and thermal systems,  
Piping and fluid systems,  
Mechanical equipment and utilities.



## Oil & Gas

Engineering and design support,  
Detailed engineering,  
Construction supervision,  
QA/QC and compliance.



## Food and Process Engineering

Process design and optimisation,  
Food processing systems,  
Production lines and equipment,  
Quality and safety compliance.

# Key Projects Experience

## Buildings and Special Structures

Quelimane General Hospital Rehabilitation

**Client:** United Nations Development Programme (UNDP)

**Scope:** Construction Supervision

Integrated Market – Tete

**Client:** Ministry of Economy and Finance (PLED)

**Scope:** Feasibility Study and Detailed Design

Climate Resilience Project – Nampula (Zone A)

**Client:** MINEDH

**Scope:** Construction Supervision

Sports Complex – Matutuine

**Client:** Bank of Mozambique

**Scope:** Detailed Design and Technical Assistance

Topuito Industrial Eco Park – Village & Training Centre

**Client:** Economic Linkages for Diversification Project (PLED)

**Scope:** Detailed Design and Construction Supervision

## Transport and Infrastructure

Flood Protection – Save & Buzi Rivers (Sofala)

**Client:** National Directorate for Water Resources Management (DNGRRH)

**Scope:** Feasibility Study, Detailed Design and ESIA

Maputo Metropolitan Transport Study (METRAP)

**Client:** Oriental Consultants / JICA

**Scope:** Traffic Studies and Urban Mobility Analysis

Sena Railway Rehabilitation – Beira–Moatize (547 km)

**Client:** Mozambique Ports and Railways (CFM)

**Scope:** Construction Supervision

Roads Technical Assistance – Maputo Province (ANE)

**Client:** National Roads Administration (ANE)

**Scope:** Supervision of 40+ contracts, including N2 Boane–Namaacha (39 km) and N2 Matola–Boane (20 km)

Topuito Industrial Eco Park – Village & Training Centre

**Client:** Economic Linkages for Diversification Project (PLED)

**Scope:** Detailed Design and Construction Supervision

## Energy

100 MW Gas & Steam Combined-Cycle Power Plant

**Client:** Electricidade de Moçambique, EP (EDM)

**Scope:** Technical Assistance and Construction Supervision

Transmission Line & Access Road – Tsate Power Plant

**Client:** World Bank

**Scope:** Route Study

Mini Hydropower Plant – Luaice

**Client:** FUNAE, FP

**Scope:** Construction Supervision

Hybrid Solar Mini-Grids (5) – Nampula & Zambézia

**Client:** FUNAE, FP

**Scope:** Construction Supervision

Maputo Power Distribution Network Rehabilitation & Upgrade

**Client:** Electricidade de Moçambique, EP (EDM)

**Scope:** Design, Procurement and Construction Supervision



## Water & Hydraulic Infrastructure

Pumping System, Water Treatment Plant and Distribution Network Expansion

**Client:** HCB

**Scope:** Design Review and Construction Supervision

Moeda Plateau Water Supply System

**Client:** FIPAG

**Scope:** Study and Detailed Design

Sussundenga Water Supply System – Manica Province

**Client:** Municipal Council of Sussundenga

**Scope:** Design and Construction Supervision

Gandlaze (90 ha) and 7 de Abril (138 ha) Irrigation Schemes

**Client:** FAR – Agricultural Promotion and Rural Extension Fund, FP

**Scope:** Design Review and Construction Supervision

Angoche Fishing Port

**Client:** Ministry of the Sea, Inland Waters and Fisheries

**Scope:** Environmental Impact Assessment (EIA) and Environmental Management Plan (EMP)

## Geotechnics

Mavoco Industrial Waste Landfill – Phases III & IV

**Client:** Mozal

**Scope:** Design

Locómue Dam

**Client:** ARA Norte

**Scope:** Construction Supervision

Manhiça Wind Farm

**Client:** DNV GL Energy USA Inc.

**Scope:** Geotechnical Investigation

Cahora Bassa Dam – North Slope Protection

**Client:** HCB

**Scope:** Geotechnical Investigation and Construction Supervision

Pequenos Libombos, Massingir and Corumana Dams – Restoration of Normal Operation

**Client:** DNAAS

**Scope:** Construction Supervision

## Oil and Gas

Integrated Engineering Services for Oil & Gas Projects

**Client:** Anadarko

**Scope:** Technical Assistance

Afungi Village Licensing

**Client:** Total Mozambique LNG

**Scope:** Licensing Support, Technical Assistance and Third-Party Inspection

Muxara Camp Remodelling

**Client:** Anadarko

**Scope:** Design

Nacala Gas Pipeline

**Client:** Anadarko

**Scope:** Basic Study

Pemba Ocean Terminal

**Client:** Petromoc

**Scope:** Design

## Mechanical Engineering - Industrial, HVAC & Medical

Integrated Cold Storage Systems – Fish, Vegetables and Tubers

**Client:** Ministry of Economy and Finance (PLED)

**Scope:** Detailed Design and Construction Supervision

Port Infrastructure Mechanical Systems – Power Substation Facilities

**Client:** Maputo Port Development Company (MPDC)

**Scope:** Mechanical Systems Design

Medical Gas Systems – Mangungumete Health Centre

**Client:** Sasol

**Scope:** Detailed Design

Medical Gas Systems – Mocuba District Hospital

**Client:** Jhpiego

**Scope:** Design Review and Optimisation

Power Generation Systems – Umbelúzi Pumping Station

**Client:** Mozal

**Scope:** Detailed Design



## Food & Process Engineering (Agro-Industrial Systems)

Youth Employment Support Project

**Client:** IPEME, IP

**Scope:** Consulting Services for update the training content and develop training manuals for short courses

Food Services Infrastructure Development Programme

**Client:** ANEP – MozSkills

**Scope:** Technical Assistance, HACCP Implementation and Food Safety Training

Banana Processing Industry – Flour and Chips Production

**Client:** KRISPI

**Scope:** Technical and Economic Feasibility Study and Implementation Support





# Gallery





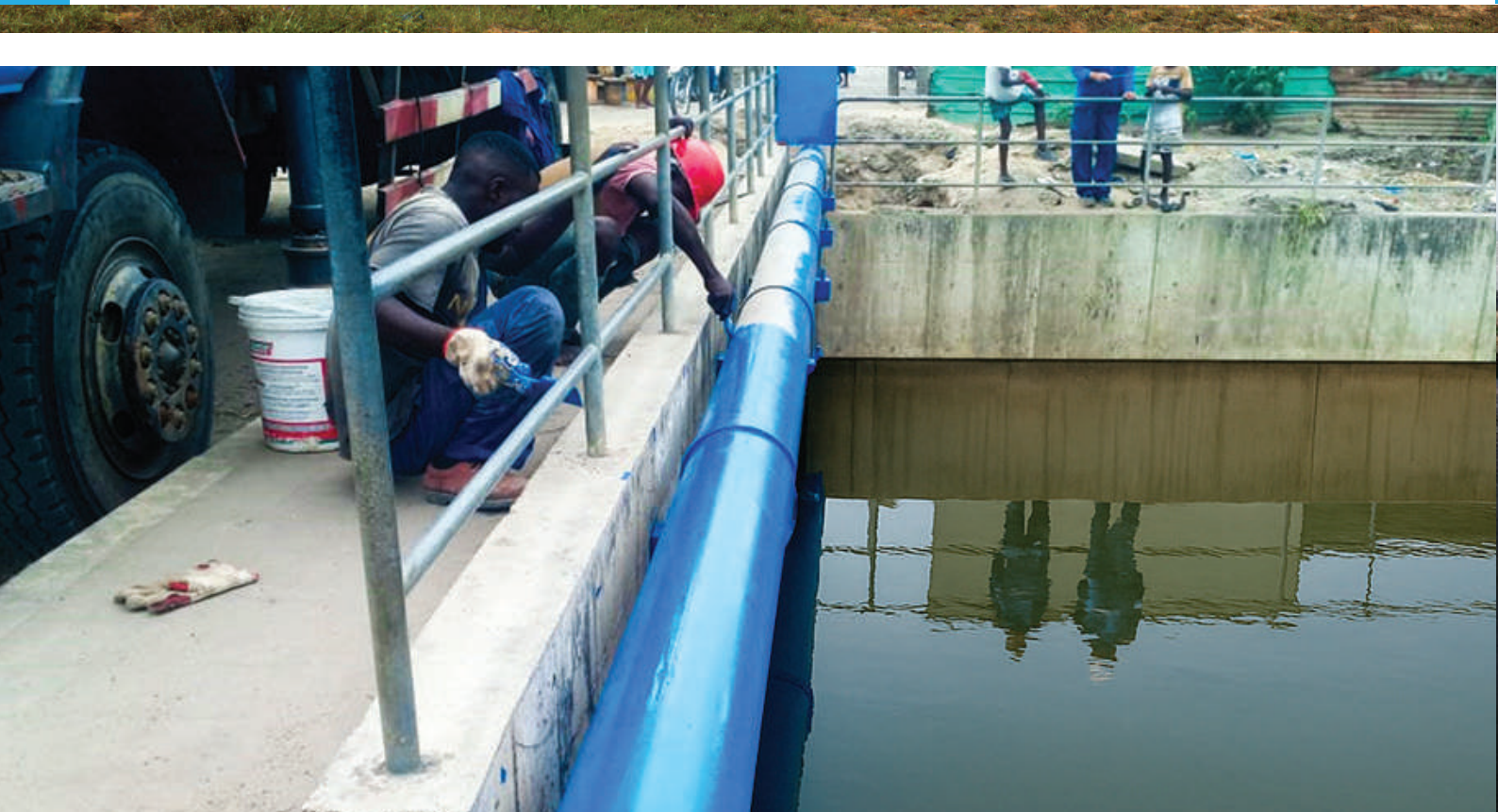
**JAT IV - Commercial Building Development – Maputo**



**Strategic Road Infrastructure – N2 Boane – Namaacha**



**Zimpeto Power Substation – Maputo**



**Urban Water Supply Network – Chota, Beira**



**Dam Rehabilitation and Operational Recovery – Southern Mozambique**



**Coastal Protection Infrastructure Improvement Works – Maputo**



**Institutional Capacity Building – Food Safety and Production Training**



**Port of Maputo – Berths 2, 3 and 4 Detailed Inspection and Structural Assessment**

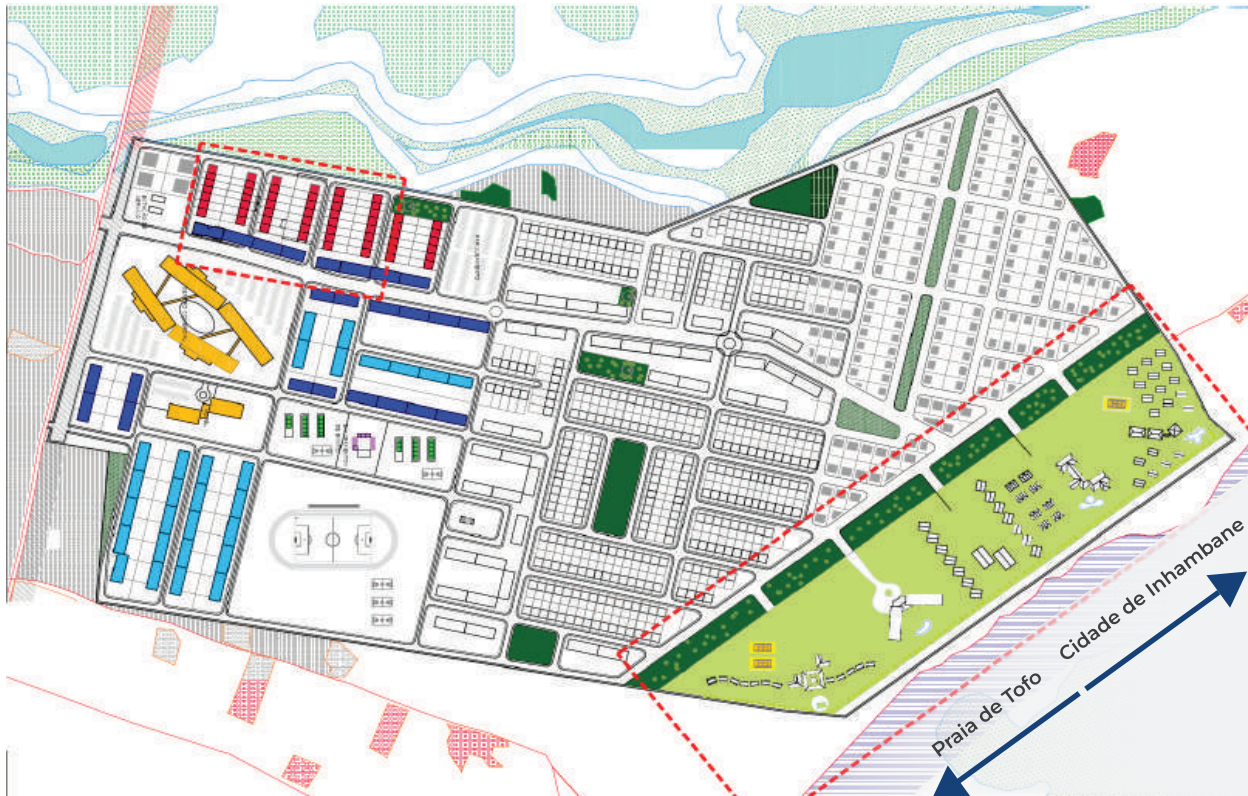


**Sports Infrastructure Development – Bank of Mozambique, Matutuíne**

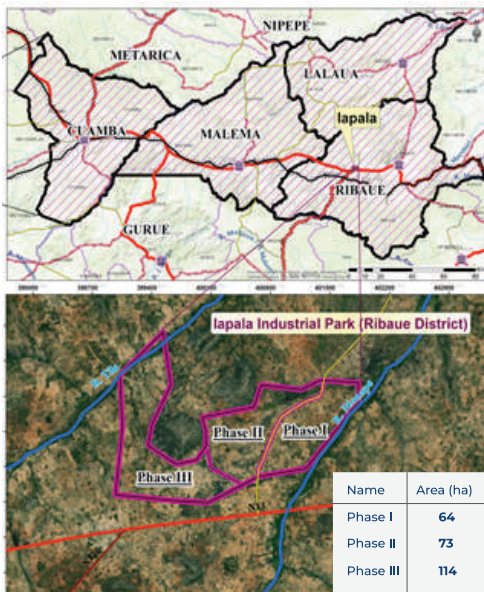


**Healthcare Infrastructure – Matewene Health Centre, Tete**

# Strategic Projects Developed by TÉCNICA



Chamane Urban Masterplan – Inhambane (100 ha)



Ipala Industrial Park - Development Hub



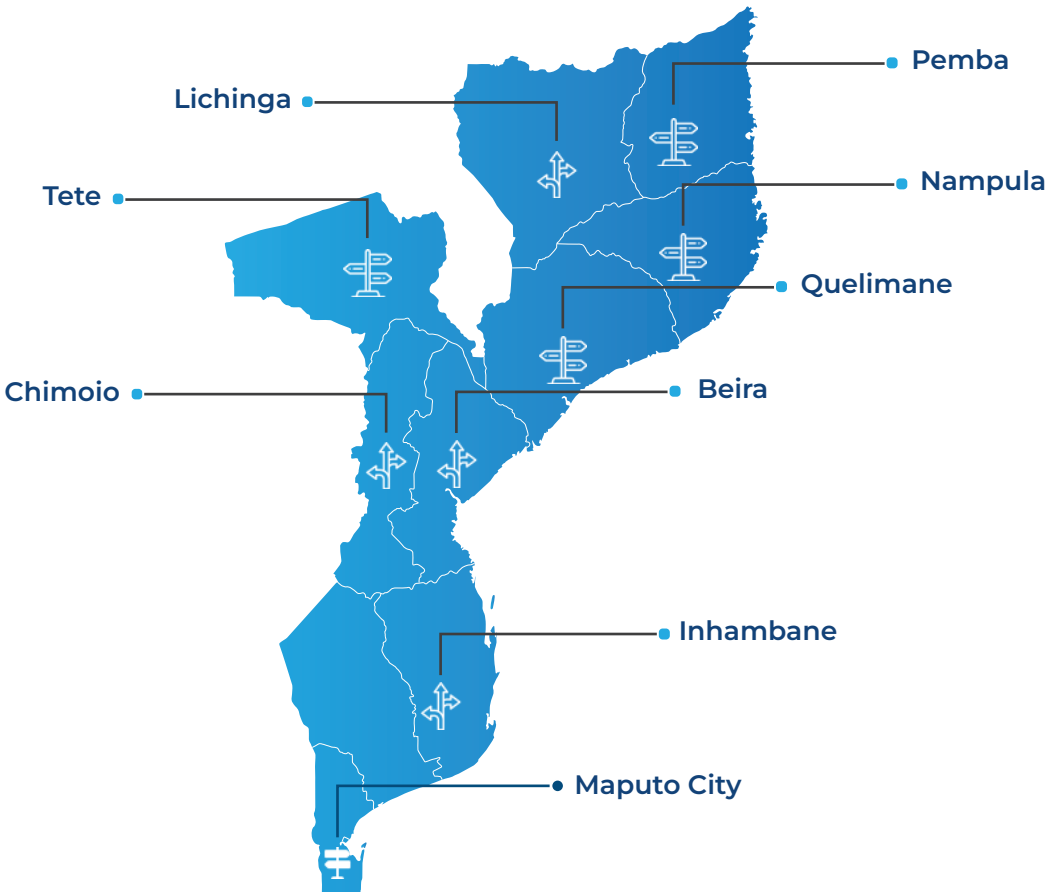
Nacala Industrial Park - Development Hub

# Our Presence




With headquarters in Maputo, TÉCNICA has established a strong nationwide presence, ensuring efficient mobilization, coordination and delivery of engineering services across Mozambique.

Our operational footprint includes branch offices in Nampula, Pemba, Tete and Quelimane, as well as representations in Lichinga, Chimoio and Inhambane, enabling proximity to clients and projects throughout the country.

This decentralized structure allows for effective project supervision, rapid response, and in-depth knowledge of local conditions, while maintaining high standards of quality, control and technical performance.



**Legend**

-  Headquarters
-  Branch Offices
-  Representations

## Contact Us

TÉCNICA – Engenheiros Consultores, Lda.

Av. 25 de Setembro No. 2526, 1st Floor

Maputo – Mozambique

+258 21 322 185 | +258 82 309 8520

[tec@tec.co.mz](mailto:tec@tec.co.mz)

[www.tec.co.mz](http://www.tec.co.mz)



[www.tec.co.mz](http://www.tec.co.mz)

2026